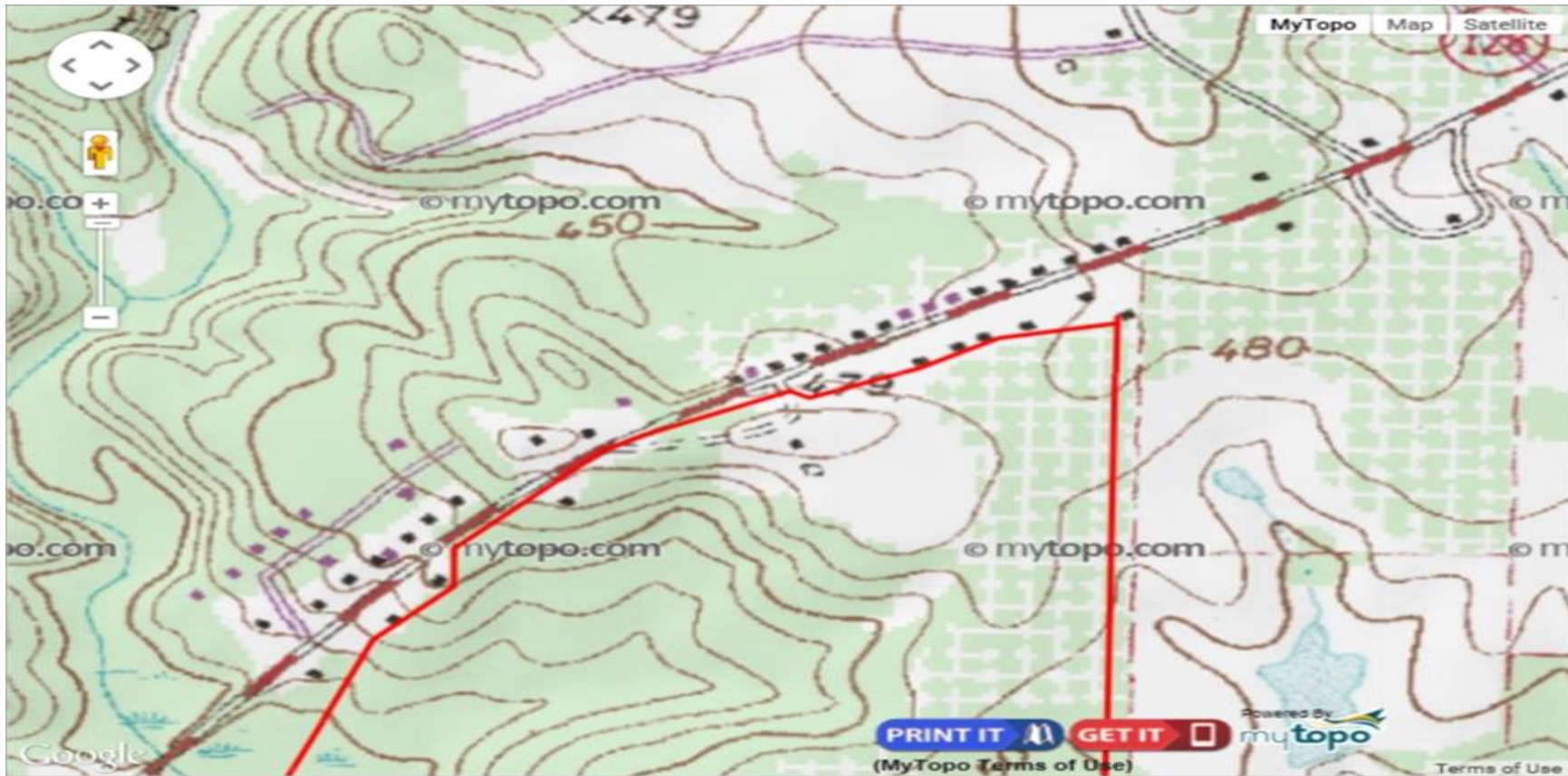


Great family recreation/hunting tract with merchantable timber in Crawford County, GA.



Property Details:

Price : \$559,000
Acreage : 243.00
MOPLS ID : 4994
County : Crawford
Address : Highway 128
Crawford, Georgia



Very nice mixed use recreational and timberland tract containing 243 acres with merchantable timber including planted pine and natural hardwood. All property rights including water rights, mineral rights and gas and oil rights are included. A scenic perennial creek flows through this property that also includes a stocked two-acre pond for freshwater fishing. Numerous food plots with enclosed hunting stands provide comfortable hunting options. The property has an excellent population of white-tail deer, turkey, hogs, and small game. This tract is located a half-mile west of the City of Roberta on Hwy 128. All utilities are available including water and sewer. Property has a nice 1000 sq. ft. 2 bedroom plus 2 bath modular home, a separate bunk house with half-bath, and 30x60 metal building. The property has been meticulously maintained and has a good internal road system that also makes for great ATV, equestrian, hiking, and mountain biking trails. The planted pine timber is merchantable and has been thinned once.

Scan the code above with your mobile device or click it to go directly to the Great family recreation/hunting tract with merchantable timber in Crawford County, GA.

Great family recreation/hunting tract with merchantable timber in Crawford County, GA.

